



dragonfil



Long Lasting Carnation Tortrix Moth Trap

Pheromone trap for the monitoring and capture of Carnation Tortrix Moths (*Cacoecimorpha pronubana*)

Pack Contents:

- Re-usable Carnation Tortrix Moth Trap
- 2 Pheromone Lures
- 1 Circular Sticky Pad
- String Hanger
- Instruction Leaflet



Assembly Of Trap:

- Remove paper from yellow sticky pad and place at bottom of bucket
- Place the green cone inside the top of the bucket
- Secure strap around bottom of the bucket, in the indents, and press arrow heads into corresponding holes in the green lid
- Remove the pheromone lure from the foil sachet and place in cage
- Fit the cage into the hole amidst the top of the lid
- Place the cap on top of the lure cage
- Attach string hanger to the loops in the lid
- Proceed to hang the trap in desired treatment area
- Store any unopened lures in a fridge or freezer until required

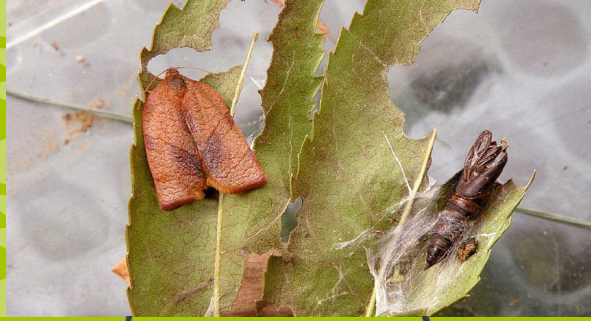
How To Use:

- Place traps out from the start of May
- Each pheromone lure will remain active for approximately 6 weeks





dragonfli



Long Lasting Carnation Tortrix Moth Trap

The Carnation Tortrix Moth (*Cacoecimorpha pronubana*) is a small moth with a wingspan of 15-25mm.

The caterpillars are pale green with brown heads and can grow up to 20mm in length. Each female can lay up to 700 eggs. These are laid in batches on the upper surfaces of leaves. The moth can have several generations a year and can continue at any time in the year if growing in heated glass.

Dragonfli provides a Carnation Tortrix moth pheromone trap, which incorporates a species specific lure to attract male Carnation Tortrix moths.

The male moths are attracted by the pheromone lure and fly inside the trap through the holes on the side where they then drop down into the trap. The trap is also supplied with a sticky pad that is placed in the bottom of the trap to help retain the moths in the trap. The more male moths that are caught, the less there are available for mating with females. This can help reduce Carnation moth egg laying and disrupt the Carnation Moth lifecycle.

Traps can be re-used each year when a new pheromone lure is added.



Other pheromone and attractant traps in the Dragonfli range:





dragonfli





Carnation Tortrix Moth Egg Killer Sachets (*Trichogramma evanescens*)

Please use immediately upon receipt

Required Conditions:

- Temperature: between 15 and 35°C
- For inside use only
- Do not apply *Trichogramma* if insecticides have been used in the past 1-2 weeks

Before Application:

- Do not open the sachet. The sachet already contains a small emergence hole
- Manually remove any caterpillars from greenhouses before applying sachets
- If using our **Carnation Tortrix Moth Pheromone Traps**, ensure sachets are placed away from the traps so the wasps do not accidentally fly into the traps. The wasps are not attracted to the pheromone lure within these traps

Application:

- Place the sachets down horizontally on a low level within the greenhouse, where the wasps will not be disturbed
- Ensure to avoid blocking the emergence hole
- Do not place objects on top of sachets as you may damage the pupae inside
- The tiny *Trichogramma* wasps tend to fly upwards as they emerge from the sachet, so ensure there is sufficient space above the sachet to enable this
- One sachet can treat an area of up to 25 square metres

Next Steps:

- The parasitic wasps will emerge over a 2-4 week period
- Observe Tortrix Moth pest levels over the next 3 weeks and consider applying more *Trichogramma* if Tortrix caterpillar populations remain high
- Remove your sachets after 4 weeks